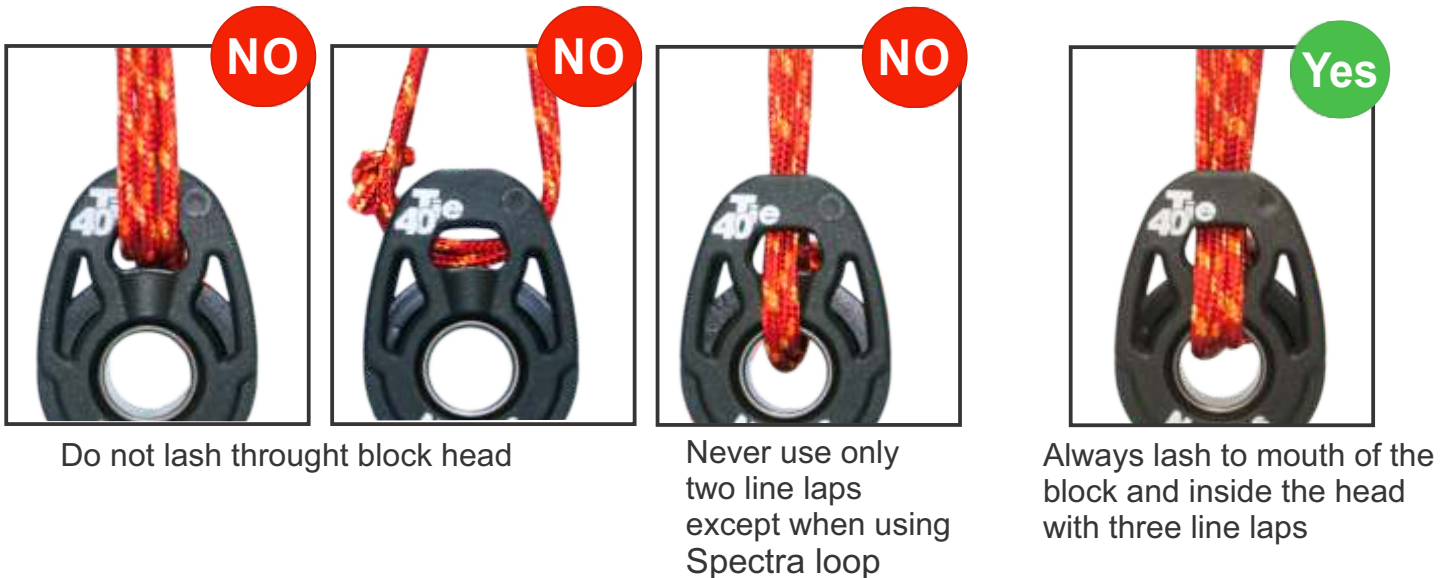




NautosTM

TIE ON BLOCK HT2040T

- Use only a double fisherman's knot.
<http://www.animatedknots.com/doublefishermans/#ScrollPoint>
- Never use damaged or frayed line.
- Always check knots and splices.
- Every 24 months replace line even with no visible damage



Do not lash through block head

Never use only two line laps except when using Spectra loop

Always lash to mouth of the block and inside the head with three line laps



Lash only to objects with rounded edges, avoid sharp corners.

Specifications

Sheave Ø: 40mm
Maximum working load: 220kg
Breaking load: 500kg
Maximum line Ø: 10mm
Maximum tie line Ø: 3mm

Sheave Ø: 1 9/16in
Maximum working load: 485lb
Breaking load: 1102lb
Maximum line Ø: 3/8in
Maximum tie line Ø: 1/8in

Components

01 block
01 loop 20cm / 8in
01 loop 15cm / 6in
50cm / 20in of 2mm line
20cm / 8in twine
01 dogbone lock

Lashing for the Fisherman's knot



Start with 3mm polyester line through the center opening (axle)



Send one leg through the opening toward you, then by the top hole, under the shackle then back, again by the top hole, then back IN THE SAME SIDE opening then through the axle



Tie the rope with a double fisherman's knot for 100 % load. Cut the remaining rope, carefully burn or glue seal the ends

After this, go through the opposite opening, then by the top hole, under the shackle, back to the top hole then out same opening and back through the axle. If this is correct, the block sits transverse to the shackle/eye. Repeat this until you have **three legs each side**.

To get more information on how to make the knot, check the below internet link

<http://www.animatedknots.com/doublefishermans/#ScrollPoint>

Lashing with the loops

SPECTRA LOOP WITH DOGBONE LOCK



Start with the loop positioned like fig.1



Insert the dogbone fig. 2



Pass the twine as shown in fig. 3



Make 3 passes as shown. Stretch hard during the process fig.4



Finalize with a Flemish Bend (Fig. 5 knot) Burn the twine ends.